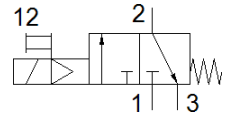


# on-off valve MS6-EE-1/2-V110-S

Part number: 538731

FESTO

Electrical, with silencer, direction of flow: from left to right



## Data sheet

Feature	values
Design structure	Piston slide
Type of actuation	electrical
Exhaust-air function	not throttleable
Manual override	detenting Pushing
Type of reset	mechanical spring
Type of piloting	Piloted
Valve function	3/2 closed, monostable
Operating pressure	4 ... 10 bar
C value	29 l/sbar
b value	0.4
Standard nominal flow rate	7,000 l/min
Duty cycle	100%
Characteristic coil data	110 V AC: 50/60 Hz, pick-up power 3 VA, holding power 2.4 VA
Permissible voltage fluctuation	+/- 10 %
Operating medium	Compressed air in accordance with ISO8573-1:2010 [7:4:4] Inert gases
Note on operating and pilot medium	Lubricated operation possible (subsequently required for further operation)
Corrosion resistance classification CRC	2 - Moderate corrosion stress
Materials note	Free of copper and PTFE Conforms to RoHS
Protection class	IP65
Ambient temperature	-10 ... 60 °C
Authorisation	c UL us - Recognized (OL)
Mounting type	Optional Line installation with accessories
Assembly position	Any
Flow direction	non reversible
Product weight	0.816 g
Pneumatic connection, port 1	G1/2
Pneumatic connection, port 2	G1/2
Pneumatic connection, port 3	G1/2
Pilot air supply	Internal
Electrical connection	Plug Cubic design Per DIN EN 175301-803 Design C
Materials information for seals	NBR
Materials information, housing	Aluminium die cast