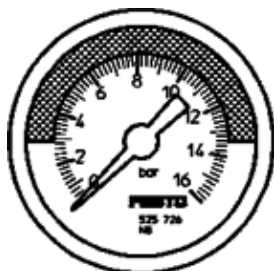


# pressure gauge MA-50-16-R1/4-E-RG

Part number: 525729

FESTO

With display unit in bar, adjustable red/green range.



## Data sheet

| Feature                                 | values                        |
|---|-------------------------------|
| Indicating range [bar]                  | 0 ... 16 bar                  |
| Conforms to standard                    | EN 837-1                      |
| Nominal size of pressure gauge          | 50                            |
| Design structure                        | Bourdon-tube pressure gauge   |
| Mounting type                           | Line installation             |
| Operating medium                        | Inert gases<br>Neutral fluids |
| Operating pressure                      | 0 ... 16 bar                  |
| Alternating load factor                 | 0.66                          |
| Measurement accuracy class              | 2,5                           |
| Protection class                        | IP43                          |
| Medium temperature                      | -20 ... 60 °C                 |
| Ambient temperature                     | -20 ... 60 °C                 |
| Materials note                          | Conforms to RoHS              |
| Position of connection                  | Rear side central             |
| Pneumatic connection                    | R1/4                          |
| Materials in contact with media         | Brass                         |
| Materials information for screw-in stud | Brass                         |
| Materials information, housing          | ABS                           |
| Materials info, viewing window          | PMMA                          |
| Housing colour                          | Black                         |
| Product weight                          | 75 g                          |
| Note on operating and pilot medium      | No acetylene<br>No oxygen     |