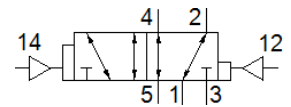
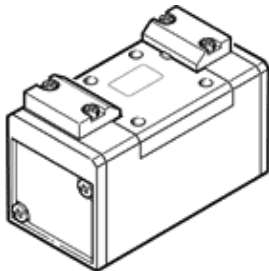


pneumatic valve JD-5/2-D-2-C-EX

Part number: 536017

FESTO

5/2-way valve, bistable, dominant, pneumatically operated.



Data sheet

Feature	values
Valve function	5/2 bistable-dominant
Type of actuation	pneumatic
Width	54 mm
Standard nominal flow rate	2,300 l/min
Operating pressure	-0.9 ... 16 bar
Design structure	Piston slide
Authorisation	Germanischer Lloyd
Nominal size	11.5 mm
Grid dimension	56 mm
Exhaust-air function	throttleable
Sealing principle	soft
Assembly position	Any
Conforms to standard	ISO 5599-1
Manual override	None
ISO code	203
Type of piloting	direct
Flow direction	reversible
Freedom from overlap	Yes
Note on forced dynamisation	Switching frequency at least once a week
Pilot pressure	2 ... 16 bar
Switching time reversal	8 ms
Switching time reversal (dominating)	8 ms
ATEX category Gas	II 2G
Explosion ignition protection type Gas	c T4
ATEX category Dust	II 2D
Explosion ignition protection type Dust	c T130°C
Explosion-proof ambient temperature	-10°C ≤ Ta ≤ +60°C
Operating medium	Compressed air in accordance with ISO8573-1:2010 [7:4:4]
Note on operating and pilot medium	Lubricated operation possible (subsequently required for further operation)
CE mark (see declaration of conformity)	to EU directive explosion protection (ATEX)
Vibration resistance	Transport application test at severity level 1 in accordance with FN 942017-4 and EN 60068-2-6
Shock resistance	Shock test with severity level 2 in accordance with FN 942017-5 and EN 60068-2-27
Medium temperature	-10 ... 60 °C
Sound pressure level	85 dB(A)
Pilot medium	Compressed air in accordance with ISO8573-1:2010 [7:4:4]
Ambient temperature	-10 ... 60 °C
Product weight	550 g
Mounting type	On sub-base With through-hole and screw
Pilot air port 12	Connection plate size 2 as per ISO 5599-1
Pilot air port 14	Connection plate size 2 as per ISO 5599-1

Feature	values
Pneumatic connection, port 1	Connection plate size 2 as per ISO 5599-1
Pneumatic connection, port 2	Connection plate size 2 as per ISO 5599-1
Pneumatic connection, port 3	Connection plate size 2 as per ISO 5599-1
Pneumatic connection, port 4	Connection plate size 2 as per ISO 5599-1
Pneumatic connection, port 5	Connection plate size 2 as per ISO 5599-1
Materials note	Conforms to RoHS
Materials information for seals	HNBR NBR
Materials information, housing	Aluminium die cast