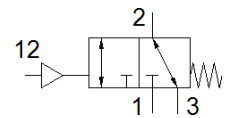
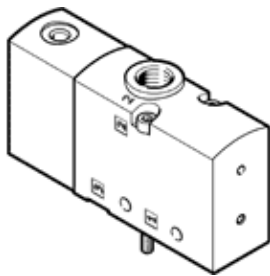


pneumatic valve VUWS-L30-M32C-M-G38

Part number: 575578

FESTO



Data sheet

Feature	values
Valve function	3/2 closed, monostable
Type of actuation	pneumatic
Valve size	31 mm
Standard nominal flow rate	2,300 l/min
Operating pressure	-0.9 ... 10 bar
Design structure	Piston slide
Type of reset	mechanical spring
Nominal size	9.4 mm
Exhaust-air function	throttleable
Sealing principle	soft
Assembly position	Any
Manual override	None
Type of piloting	direct
Pilot air supply	Internal
Flow direction	reversible
Note on forced dynamisation	Switching frequency at least once a week
Pilot pressure	2.5 ... 10 bar
Switching time off	73 ms
Switching time on	16 ms
Operating medium	Compressed air in accordance with ISO8573-1:2010 [7:4:4]
Note on operating and pilot medium	Lubricated operation possible (subsequently required for further operation)
Vibration resistance	Transport application test at severity level 2 in accordance with FN 942017-4 and EN 60068-2-6
Shock resistance	Shock test with severity level 2 in accordance with FN 942017-5 and EN 60068-2-27
Corrosion resistance classification CRC	2 - Moderate corrosion stress
Medium temperature	-10 ... 60 °C
Pilot medium	Compressed air in accordance with ISO8573-1:2010 [7:4:4]
Ambient temperature	-10 ... 60 °C
Product weight	394 g
Mounting type	Optional on manifold rail with through hole
Scavenging orifice connection	Non-ducted
Pilot air port 12	G1/8
Pneumatic connection, port 1	G3/8
Pneumatic connection, port 2	G3/8
Pneumatic connection, port 3	G3/8
Materials note	Conforms to RoHS
Materials information for seals	HNBR NBR
Materials information, housing	Aluminium die cast Painted
Material information, piston spool	Wrought Aluminium alloy