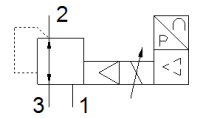


# proportional pressure regulator MPPEs-3-1/2-PU-PO-010

Part number: 187332

FESTO



## Data sheet

Feature	values
Nominal diameter, pressurisation	11 mm
Nominal diameter, exhaust	12 mm
Type of actuation	electrical
Sealing principle	soft
Assembly position	Any
Design structure	Piloted piston regulator
Short circuit strength	for all electrical connections
Safety instructions	Safety position of MPPEs
Polarity protected	for all electrical connections
Valve function	3-way closed proportional-pressure regulator
Pressure regulation range	0 ... 10 bar
Inlet pressure 1	11 ... 12 bar
Max. pressure hysteresis	0.05 bar
Switching time off	1,000 ms
Switching time on	230 ms
Operating voltage range DC	18 ... 30 V
Residual ripple	10 %
SETPOINT/ACTUAL values	Voltage type 0 - 10 V
Operating medium	Compressed air in accordance with ISO8573-1:2010 [7:4:4] Inert gases
Note on operating and pilot medium	Lubricated operation possible (subsequently required for further operation)
CE mark (see declaration of conformity)	to EU directive for EMC
Corrosion resistance classification CRC	2 - Moderate corrosion stress
Medium temperature	0 ... 60 °C
Protection class	IP65
Ambient temperature	0 ... 50 °C
Authorisation	RCM Mark
Product weight	2,670 g
Electrical connection	Plug Round design to DIN 45326 M16x0,75 8-pin
Mounting type	with through hole
Pneumatic connection, port 1	G1/2
Pneumatic connection, port 2	G1/2
Pneumatic connection, port 3	G1/2
Materials information, housing	Wrought Aluminium alloy
Materials information for membrane	NBR