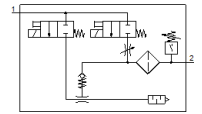
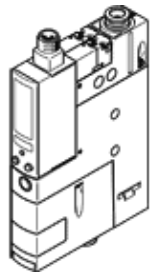


vacuum generator OVEM-05-H-B-QO-CE-N-1P

Part number: 540021

FESTO

Supply/vacuum port with QS fittings, exhaust port with open silencer.



Data sheet

| Feature | values |
|---|--|
| Nominal size, Laval nozzle | 0.45 mm |
| Grid dimension | 20 mm |
| Design, silencer | open |
| Assembly position | Any |
| Ejector characteristic | High vacuum Standard |
| Grade of filtration | 40 µm |
| Manual override | Pushing |
| Integrated function | Ejector pulse valve, electrical Flow control valve Electrical on-off valve Filter Non-return valve Open silencer Vacuum switch |
| Design structure | modular |
| Short circuit strength | Yes |
| Measured variable | Relative pressure |
| Measuring principle | Piezoresistive |
| Switching element function | Normally open contact |
| Switching function | Threshold value comparator Threshold value with fixed hysteresis |
| Valve function | closed |
| Polarity protected | for all electrical connections |
| Standard switching input | IEC 61131-2 |
| Type of display | LED |
| Threshold setting range | -1 ... 0 bar |
| Setting options | Teach-In |
| Switching position indicator | LED |
| Operating status display | Optical |
| Operating pressure | 2 ... 8 bar |
| Operating pressure for max. vacuum | 5.1 bar |
| Max. vacuum | 93 % |
| Nominal operating pressure | 6 bar |
| Max. suction rate with respect to atmosphere | 6 l/min |
| Air supply time at nominal operating pressure | 2 s |
| Operating voltage range DC | 20.4 ... 27.6 V |
| Duty cycle | 100% |
| Inductive protective circuit | Adapted to MZ-, MY-, ME coils |
| Insulation voltage | 50 V |
| Idle current | < 80 mA |
| Max. output current | 100 mA |
| Residual current | 0.1 mA |
| Switch output | PNP |

| Feature | values |
|---|--|
| Voltage drop | <= 1.5 V |
| Characteristic coil data | 24 V DC: low-current phase 0.3 W, high-current phase 2.55 W |
| Surge strength | 0.8 kV |
| Overload withstand capability | Available |
| Degree of contamination | 3 |
| Operating medium | Compressed air in accordance with ISO8573-1:2010 [7:4:4] |
| Note on operating and pilot medium | Lubricated operation not possible |
| CE mark (see declaration of conformity) | to EU directive for EMC |
| Corrosion resistance classification CRC | 2 - Moderate corrosion stress |
| Medium temperature | 0 ... 50 °C |
| Relative air humidity | 5 - 85 % |
| Noise level at nominal operating pressure | 51 dB(A) |
| Protection class | IP65 |
| Safety class | III |
| Ambient temperature | 0 ... 50 °C |
| Authorisation | RCM Mark c UL us - Listed (OL) |
| Max. tightening torque | 0.8 Nm with female thread 2.5 Nm with clearance hole |
| Product weight | 313 g |
| Pressure measuring range | -1 ... 0 bar |
| Accuracy, FS | 0.5 %FS |
| Hysteresis | 0.02 bar |
| Switching point reproducibility, FS | 0.6 % |
| Input circuit logic | PNP (positive-switching) |
| Electrical connection | Plug M12x1 5-pin |
| Mounting type | with through hole with internal (female) thread with accessories |
| Pneumatic connection, port 1 | QS-6 |
| Pneumatic connection, port 3 | Integrated silencer |
| Vacuum connection | QS-6 |
| Materials note | Contains PWIS substances Conforms to RoHS |
| Materials information for seals | NBR |
| Material information, collector nozzle | POM |
| Materials information for filter | Mesh PA Sintered steel |
| Material information, filter housing | PA-reinforced |
| Materials information, housing | Aluminium die cast PA-reinforced |
| Regulating screw material data | Steel |
| Material information, silencer | Wrought Aluminium alloy PU foam |
| Screw material data | Steel |
| Material information, plug housing | Brass Nickel plated |
| Material information for crimp connectors | Brass Gold plated |
| Material information, pins | Steel |
| Material information, jet nozzle | Wrought Aluminium alloy |
| Material information, keypad | PA-reinforced |
| Materials information for fitting | Nickel-plated brass |