

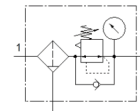
# filter regulator MS4-LFR-1/4-D7-CRM-AS

Part number: 529152

★ Core product range

12 bar maximum output pressure, 5 µm filter, with pressure gauge, lockable regulator head, plastic bowl with plastic bowl guard, manual condensate drain, direction of flow: from left to right.

FESTO



## Data sheet

| Feature                                 | values   |
|---|--|
| Size                                    | 4  |
| Series                                  | MS   |
| Actuator lock                           | Rotary knob with lock with accessories, lockable                           |
| Assembly position                       | Vertical +/- 5°  |
| Grade of filtration                     | 5 µm   |
| Condensate drain                        | manual rotary  |
| Design structure                        | Filter regulator with pressure gauge                                       |
| Max. condensate volume                  | 19 ml  |
| Controller function                     | Output pressure constant with secondary exhaust with return flow           |
| Bowl guard                              | Plastic guard  |
| Pressure gauge                          | with pressure gauge  |
| Operating pressure                      | 0.8 ... 14 bar   |
| Pressure regulation range               | 0.5 ... 12 bar   |
| Max. pressure hysteresis                | 0.25 bar   |
| Standard nominal flow rate              | 1,200 l/min  |
| Operating medium                        | Compressed air to ISO 8573-1:2010 [-:4:-]<br>Inert gases                   |
| Corrosion resistance classification CRC | 2 - Moderate corrosion stress  |
| Storage temperature                     | -10 ... 60 °C  |
| Air purity class at output              | Compressed air in accordance with ISO8573-1:2010 [6:4:4]                   |
| Medium temperature                      | -10 ... 60 °C  |
| Ambient temperature                     | -10 ... 60 °C  |
| Product weight                          | 275 g  |
| Mounting type                           | Optional<br>Front panel installation<br>Line installation with accessories |
| Pneumatic connection, port 1            | G1/4   |
| Pneumatic connection, port 2            | G1/4   |
| Materials note                          | Conforms to RoHS   |
| Materials information for sub-base      | Aluminium die cast   |
| Materials information for control panel | PA<br>POM  |
| Materials information for seals         | NBR  |
| Materials information for filter        | PE   |
| Materials information, housing          | Aluminium die cast   |
| Materials information for membrane      | NBR  |
| Materials information for bowl          | PC   |
| Material information, isolating disc    | POM  |