

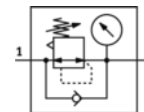
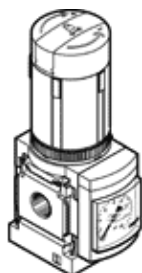
Pressure regulator MS4-LR-1/4-D6-AS

Part number: 529417

★ Standard product range

7 bar maximum output pressure, with pressure gauge, lockable regulator head, direction of flow: from left to right.

FESTO



Data sheet

Feature	values
Size	4
Series	MS
Actuator lock	Rotary knob with lock with accessories, lockable
Assembly position	Any
Design structure	directly-controlled diaphragm regulator
Controller function	Output pressure constant with secondary exhaust with return flow
Pressure gauge	with pressure gauge
Operating pressure	0.8 ... 14 bar
Pressure control range	0.3 ... 7 bar
Max. pressure hysteresis	0.25 bar
Standard nominal flow rate	1,800 l/min
Operating medium	Compressed air in accordance with ISO8573-1:2010 [7:4:4] Inert gases
Note on operating and pilot medium	Lubricated operation possible (subsequently required for further operation)
Corrosion resistance classification CRC	2
Storage temperature	-10 ... 60 °C
Medium temperature	-10 ... 60 °C
Ambient temperature	-10 ... 60 °C
Product weight	225 g
Mounting type	Optional Front panel installation Line installation with accessories
Pneumatic connection, port 1	G1/4
Pneumatic connection, port 2	G1/4
Materials note	Conforms to RoHS
Materials information for sub-base	Aluminium die cast
Materials information for control panel	POM PA
Materials information for seals	NBR
Materials information, housing	Aluminium die cast
Materials information for membrane	NBR