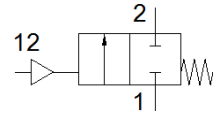
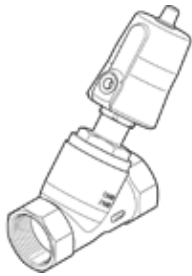


angle seat valve

VZXF-L-M22C-M-B-N112-350-M1-V4V4T-50-6

Part number: 1002558

FESTO



Data sheet

Feature	values
Design structure	Poppet valve with spring return
Type of actuation	pneumatic
Sealing principle	soft
Assembly position	Any
Mounting type	Line installation
Process valve connection	NPT1 1/2
Nominal diameter DN	40
Nominal size	35 mm
Valve function	2/2 closed, monostable
Flow direction	non reversible
Medium pressure	0 ... 6 bar
Nominal pressure of process valve	40
Exhaust-air function	not throttleable
Type of reset	mechanical spring
Type of piloting	With external control
Pneumatic connection	G1/8
Operating pressure	6 ... 10 bar
Medium	Vapour Mineral oil-based hydraulic oil Inert gases Mineral oil Water Filtered compressed air, degree of filtration 200 µm Neutral fluids
Operating medium	Compressed air in accordance with ISO8573-1:2010 [7:4:4]
Max. viscosity	600 mm ² /s
Medium temperature	-40 ... 200 °C
Ambient temperature	-10 ... 60 °C
Flow rate Kv	17.5 m ³ /h
Materials note	Contains PWIS substances Conforms to RoHS
Materials information, housing	Stainless steel casting
Material number for housing	1.4408
Notes on materials for drive head	Stainless steel
Information on materials, spindle washer	PTFE
Information on materials, seat seal	PTFE
Product weight	2,500 g
CE mark (see declaration of conformity)	to EU directive pressure devices
Corrosion resistance classification CRC	3 - High corrosion stress