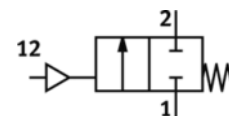


Angle seat valve

VZXF-L-M22C-M-B-G2-450-M1-V4V4T-50-3

Part number: 1002523

FESTO



Data sheet

Feature	values
Design structure	Poppet valve with spring return
Type of actuation	pneumatic
Sealing principle	soft
Assembly position	Any
Mounting type	Line installation
Process valve connection	G2
Nominal diameter DN	50
Valve function	2/2 closed, monostable
Flow direction	non reversible
Operating pressure	3 bar
Nominal pressure of process valve	40
Exhaust-air function	not throttleable
Type of reset	mechanical spring
Type of piloting	With external control
Auxiliary pilot air port 12	G1/8
Pilot pressure	4 ... 10 bar
Pilot medium	Compressed air in accordance with ISO8573-1:2010 [7:4:4]
Medium	Inert gases Mineral oil Water Filtered compressed air, degree of filtration 200 µm Neutral fluids Mineral oil-based hydraulic oil
Operating medium, process valve	Inert gases Compressed air grade of filtration 200 µm Water Mineral oil Non-aggressive fluid Mineral oil-based hydraulic oil
Max. viscosity	600 mm ² /s
Medium temperature	-40 ... 200 °C
Ambient temperature	10 ... 60 °C
Flow rate Kv	33.8 m ³ /h
Standard nominal flow rate	36,100 l/min
Switching time on	120 ms
Switching time off	320 ms
Materials note	Contains PWIS substances Conforms to RoHS
Materials information, housing	Stainless steel casting
Material number for housing	1.4408
Notes on materials for drive head	Stainless steel
Materials information for seals	PTFE
Product weight	3,500 g
CE mark (see declaration of conformity)	to EU directive pressure devices
Corrosion resistance classification CRC	3