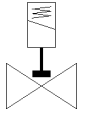
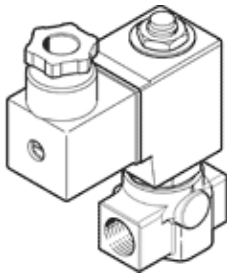


solenoid valve

VZWD-L-M22C-M-N18-10-V-1P4-90

Part number: 1491871

FESTO



Data sheet

| Feature | values |
|---|---|
| Design structure | Directly actuated poppet valve |
| Type of actuation | electrical |
| Sealing principle | soft |
| Assembly position | Any |
| Mounting type | Line installation |
| Process valve connection | NPT 1/8 |
| Electrical connection | Plug Cubic design to EN 175301-803 Design A |
| Nominal size | 1 mm |
| Valve function | 2/2 closed, monostable |
| Manual override | None |
| Flow direction | non reversible |
| Medium | Compressed air in accordance with ISO8573-1:2010 [7:4:4] Inert gases Mineral oil Water Neutral fluids Other media on request |
| Nominal pressure of process valve | 100 |
| Differential pressure | 0 bar |
| Characteristic coil data | 24 V DC: 11 W |
| Insulation class | H |
| Permissible voltage fluctuation | +/- 10 % |
| Duty cycle | 100% |
| Type of reset | mechanical spring |
| Type of piloting | direct |
| Medium pressure | 0 ... 90 bar |
| Max. viscosity | 22 mm ² /s |
| Medium temperature | -10 ... 80 °C |
| Ambient temperature | -10 ... 35 °C |
| Leak rate in accordance with EN 12266-1 | A |
| Flow rate Kv | 0.06 m ³ /h |
| Standard nominal flow rate | 60 l/min |
| Switching time on | 20 ms |
| Switching time off | 18 ms |
| Materials note | Contains PWIS substances Conforms to RoHS |
| Materials information, housing | Cast brass |
| Material number for housing | CW617N |
| Materials information for seals | FPM |
| Product weight | 550 g |
| Protection class | IP65 |
| Corrosion resistance classification CRC | 1 - Low corrosion stress |