

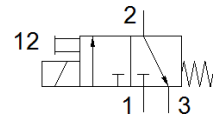
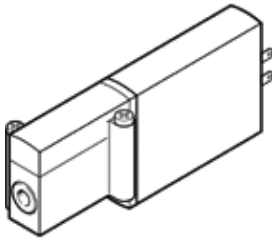
solenoid valve

MHA2-MS1H-3/2G-2

Part number: 196119

FESTO

individual valve, fast switching.



Data sheet

Feature	values
Valve function	3/2 closed, monostable
Type of actuation	electrical
Width	10 mm
Standard nominal flow rate	100 l/min
Operating pressure	-0.9 ... 8 bar
Design structure	Pressure-relieved poppet valve
Type of reset	mechanical spring
Protection class	IP65
Authorisation	RCM Mark c UL us - Recognized (OL)
Nominal size	2 mm
Grid dimension	14 mm
Exhaust-air function	throttleable
Sealing principle	soft
Assembly position	Any
Manual override	Pushing
Type of piloting	direct
Flow direction	reversible with restrictions
Polarity protected	Bipolar
Additional functions	Spark arresting Reduction of holding current Protective circuit
Operating pressure, reversible	-0.9 ... 0 bar
Maximum switching frequency	330 Hz
Switching time off	2 ms
Switching time on	1.7 ms
Tolerance for Switching time OFF	+10%/-30%
Tolerance for Switching time ON	+10%/-30%
Measuring of the switching time at 1 Hz and above	0.2 ms
Duty cycle	100%
Characteristic coil data	24 V DC: low-current phase 1.25 W, high-current phase 5 W
Permissible voltage fluctuation	+/- 10 %
Operating medium	Compressed air in accordance with ISO8573-1:2010 [7:4:4]
Note on operating and pilot medium	Lubricated operation possible (subsequently required for further operation)
CE mark (see declaration of conformity)	to EU directive for EMC
Restriction ambient and medium temperature	related to switching frequency
Corrosion resistance classification CRC	2 - Moderate corrosion stress
Medium temperature	-5 ... 40 °C
Ambient temperature	-5 ... 40 °C
Product weight	60 g
Electrical connection	Plug 2-pin
Mounting type	On sub-base

Feature	values
Pneumatic connection, port 1	Sub-base
Pneumatic connection, port 2	Sub-base
Pneumatic connection, port 3	Sub-base
Materials note	Free of copper and PTFE
Materials information for seals	HNBR NBR
Materials information, housing	Zinc die-casting coated
Screw material data	Steel Galvanised