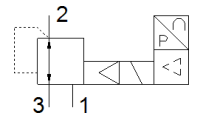


proportional pressure regulator VPPX-12L-L-1-G12-0L10H-S1

Part number: 2448444

FESTO



Data sheet

Feature	values
Nominal diameter, pressurisation	12 mm
Nominal diameter, exhaust	12 mm
Type of actuation	electrical
Sealing principle	soft
Assembly position	Any
Design structure	Pilot actuated diaphragm regulator
Short circuit strength	for all electrical connections
Safety instructions	Safety position VPPX
Polarity protected	for all electrical connections
Type of reset	mechanical spring
Type of piloting	Piloted
Valve function	3-way proportional-pressure regulator
Type of display	LED
Pressure regulation range	0.1 ... 10 bar
Inlet pressure 1	0 ... 11 bar
Max. pressure hysteresis	0.05 bar
Standard nominal flow rate	7,000 l/min
Operating voltage range DC	21.6 ... 26.4 V
Max. current consumption	500 mA
Duty cycle	100%
Max. electrical power consumption	12 W
Residual ripple	10 %
Signal range, analogue output	0 - 10 V 4 - 20 mA 0 - 20 mA
Signal range, analogue input	0 - 10 V 4 - 20 mA 0 - 20 mA
Operating medium	Compressed air in accordance with ISO8573-1:2010 [7:4:4] Inert gases
Note on operating and pilot medium	Lubricated operation not possible
CE mark (see declaration of conformity)	to EU directive for EMC
Corrosion resistance classification CRC	2 - Moderate corrosion stress
Medium temperature	10 ... 50 °C
Protection class	IP65
Ambient temperature	0 ... 60 °C
Authorisation	RCM Mark c UL us - Listed (OL)
Product weight	2,050 g
Linearity error, FS	1 %
Temperature coefficient	0.04 %/K
FS repetition accuracy	0.5 %
Repetition accuracy in ± %FS	0.5 %FS
Electrical connection	Plug M12 8-pin

Feature	values
Mounting type	Optional with through hole with accessories
Pneumatic connection, port 1	G1/2
Pneumatic connection, port 2	G1/2
Pneumatic connection, port 3	G1/2
Materials note	Conforms to RoHS
Materials information, housing	Wrought Aluminium alloy Anodised