

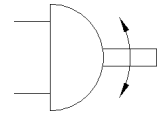
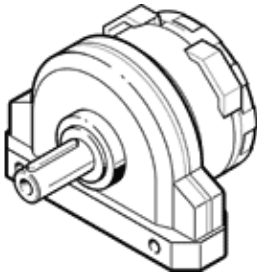
semi-rotary drive DSR-16-180-P

Part number: 11910
Product to be discontinued

FESTO

Type to be discontinued. Available until 2019. See Support Portal for alternative products.

Rotary vane principle, infinitely adjustable swivel angle. The stop system is separate from the rotary vane so that any forces which occur are absorbed by the stop cams and cushioned via flexible plastic pads.



Data sheet

| Feature | values |
|---------------------------------------|--|
| Size | 16 |
| Cushioning angle | 2.1 deg |
| Rotation angle adjustment range | 0 ... 180 deg |
| Swivel angle | 0 ... 180 deg |
| Cushioning | P: Flexible cushioning rings/plates at both ends |
| Assembly position | Any |
| Mode of operation | double-acting |
| Design structure | Rotary vane |
| Position detection | No |
| Operating pressure | 2 ... 8 bar |
| Max. swivel frequency at 6 bar | 3 Hz |
| Operating medium | Compressed air in accordance with ISO8573-1:2010 [7:-:-] |
| Ambient temperature | -10 ... 60 °C |
| Theoretical torque at 6 bar | 2 Nm |
| Product weight | 300 g |
| Mounting type | with through hole |
| Pneumatic connection | M5 |
| Materials information for drive shaft | Steel Nickel plated |
| Materials information for seals | NBR |