

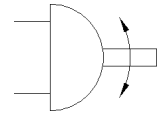
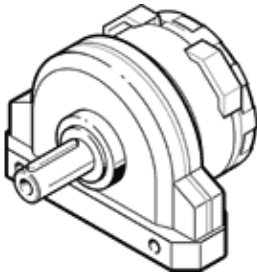
# semi-rotary drive DSR-10-180-P

Part number: 33297  
Product to be discontinued

FESTO

Type to be discontinued. Available until 2019. See Support Portal for alternative products.

Rotary vane principle, infinitely adjustable swivel angle. The stop system is separate from the rotary vane so that any forces which occur are absorbed by the stop cams and cushioned via flexible plastic pads.



## Data sheet

Feature	values
Size	10
Cushioning angle	2.4 deg
Rotation angle adjustment range	0 ... 180 deg
Swivel angle	0 ... 180 deg
Cushioning	P: Flexible cushioning rings/plates at both ends
Assembly position	Any
Mode of operation	double-acting
Design structure	Rotary vane
Position detection	No
Operating pressure	2.5 ... 8 bar
Max. swivel frequency at 6 bar	3 Hz
Operating medium	Compressed air in accordance with ISO8573-1:2010 [7:-:-]
Ambient temperature	-10 ... 60 °C
Theoretical torque at 6 bar	0.5 Nm
Product weight	100 g
Mounting type	with through hole
Pneumatic connection	M3
Materials information for drive shaft	Steel Nickel plated
Materials information for seals	NBR