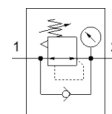
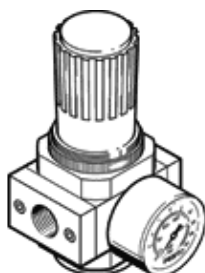


# pressure regulator LR-1-D-MAXI

Part number: 159627

FESTO

With pressure gauge, working pressure up to 12 bar.



## Data sheet

| Feature                            | values  |
|------------------------------------|---|
| Size                               | Maxi  |
| Series                             | D   |
| Actuator lock                      | Rotary knob with lock   |
| Assembly position                  | Any   |
| Design structure                   | Piloted piston regulator  |
| Controller function                | Output pressure constant<br>with secondary exhaust                          |
| Pressure gauge                     | with pressure gauge   |
| Operating pressure                 | 0 ... 16 bar  |
| Pressure regulation range          | 0.5 ... 12 bar  |
| Max. pressure hysteresis           | 0.4 bar   |
| Standard nominal flow rate         | 11,500 l/min  |
| Operating medium                   | Compressed air in accordance with ISO8573-1:2010 [7:4:4]<br>Inert gases     |
| Note on operating and pilot medium | Lubricated operation possible (subsequently required for further operation) |
| Air purity class at output         | Compressed air in accordance with ISO8573-1:2010 [7:4:4]<br>Inert gases     |
| Medium temperature                 | -10 ... 60 °C   |
| Ambient temperature                | -10 ... 60 °C   |
| Authorisation                      | Germanischer Lloyd  |
| Product weight                     | 1,200 g   |
| Mounting type                      | Front panel installation<br>Line installation<br>with accessories           |
| Pneumatic connection, port 1       | G1  |
| Pneumatic connection, port 2       | G1  |
| Materials note                     | Conforms to RoHS  |
| Materials information for sub-base | Zinc die-casting  |
| Materials information for seals    | NBR   |
| Materials information, housing     | Zinc die-casting  |