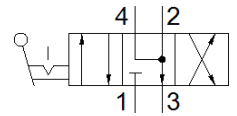
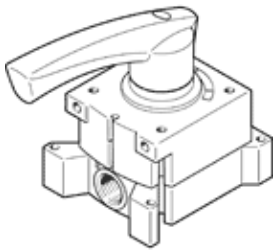


hand lever valve VHER-H-B43E-G18

Part number: 3488206

FESTO



Data sheet

Feature	values
Valve function	4/3 exhausted
Type of actuation	manual
Width	51 mm
Standard nominal flow rate	600 l/min
Operating pressure	0 ... 10 bar
Note on operating pressure	Vacuum operation -0.95 to 0 must not be connected to port 3 In the case of dual-pressure operation, the pressure at port 1 must be higher than at port 3
Design structure	Rotary slide valve
Nominal size	6 mm
Exhaust-air function	throttleable
Instructions for use	Actuate only manually
Sealing principle	Hard
Type of piloting	direct
Flow direction	non reversible
Freedom from overlap	Yes
Switching position indicator	with accessories
Operating medium	Compressed air in accordance with ISO8573-1:2010 [7:4:4]
Note on operating and pilot medium	Lubricated operation possible (subsequently required for further operation)
Corrosion resistance classification CRC	2 - Moderate corrosion stress
Medium temperature	-20 ... 80 °C
Ambient temperature	-20 ... 80 °C
Actuation torque	0.9 Nm
Product weight	260 g
Mounting type	Optional Front panel installation with through hole
Pneumatic connection, port 1	G1/8
Pneumatic connection, port 2	G1/8
Pneumatic connection, port 3	G1/8
Pneumatic connection, port 4	G1/8
Materials note	Free of copper and PTFE Conforms to RoHS
Materials information for seals	NBR
Materials information, housing	Aluminium die cast
Material information, lever	Aluminium die cast