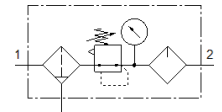
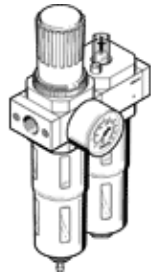


# service unit FRC-1/4-D-MINI

Part number: 159605

FESTO

Filter/regulator/lubricator combination, 40 µm filter, with metal bowl guard. With manual condensate drain.



## Data sheet

| Feature                                 | values  |
|---|---|
| Size                                    | Mini  |
| Series                                  | D   |
| Actuator lock                           | Rotary knob with lock   |
| Assembly position                       | Vertical +/- 5°   |
| Condensate drain                        | manual rotary   |
| Design structure                        | Filter regulator with pressure gauge<br>proportional standard mist lubricator |
| Max. condensate volume                  | 22 cm <sup>3</sup>  |
| Grade of filtration                     | 40 µm   |
| Bowl guard                              | Metal bowl guard  |
| Pressure gauge                          | with pressure gauge   |
| Operating pressure                      | 1 ... 16 bar  |
| Pressure regulation range               | 0.5 ... 12 bar  |
| Max. pressure hysteresis                | 0.2 bar   |
| Standard nominal flow rate              | 1,000 l/min   |
| Operating medium                        | Compressed air to ISO 8573-1:2010 [-:9:-]<br>Inert gases                      |
| Note on operating and pilot medium      | Lubricated operation possible (subsequently required for further operation)   |
| Corrosion resistance classification CRC | 2 - Moderate corrosion stress   |
| Air purity class at output              | Compressed air to ISO 8573-1:2010 [7:8:-]<br>Inert gases                      |
| Medium temperature                      | -10 ... 60 °C   |
| Ambient temperature                     | -10 ... 60 °C   |
| Authorisation                           | Germanischer Lloyd  |
| Product weight                          | 660 g   |
| Mounting type                           | Line installation<br>with accessories   |
| Pneumatic connection, port 1            | G1/4  |
| Pneumatic connection, port 2            | G1/4  |
| Materials note                          | Conforms to RoHS  |
| Materials information, housing          | Zinc die-casting  |
| Materials information for bowl          | PC  |