

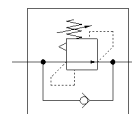
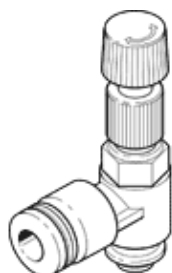
differential pressure regulator

LRLM-M5-QS-6

Part number: 153500

FESTO

Without manometer, with male thread and QS plug connector.



Data sheet

Feature	values
Controller function	Differential pressure, constant with return flow
Pneumatic connection, port 1	M5
Pneumatic connection, port 2	QS-6
Mounting type	Threaded
Nominal flow rate open	32 l/min
Pressure regulation range	2 ... 6 bar
Inlet pressure 1	0 ... 9 bar
Ambient temperature	0 ... 60 °C
Materials information, housing	PBT-reinforced
Operating medium	Compressed air in accordance with ISO8573-1:2010 [7:-:-]
Actuator lock	Knurled screw with lock nut
Assembly position	Any
Design structure	directly-controlled piston regulator with looped-through compressed air supply
Nominal flow rate closed	31 l/min
Note on operating and pilot medium	Lubricated operation possible (subsequently required for further operation)
Product weight	10 g
Materials information for screw-in stud	Brass Nickel plated
Materials note	Conforms to RoHS
Materials information for thread seal	PTFE