

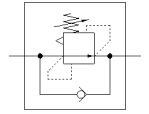
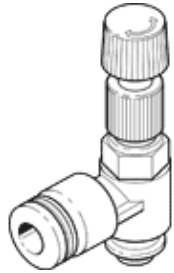
# differential pressure regulator

## LRL-1/2-QS-12

Part number: 153509

FESTO

Without manometer, with male thread and QS plug connector.



### Data sheet

Feature	values
Controller function	Differential pressure, constant with return flow
Pneumatic connection, port 1	G1/2
Pneumatic connection, port 2	QS-12
Mounting type	Threaded
Nominal flow rate open	730 l/min
Pressure regulation range	2 ... 6 bar
Inlet pressure 1	0 ... 9 bar
Ambient temperature	0 ... 60 °C
Materials information, housing	PBT-reinforced
Operating medium	Compressed air in accordance with ISO8573-1:2010 [7:-:-]
Actuator lock	Knurled screw with lock nut
Assembly position	Any
Design structure	directly-controlled piston regulator with looped-through compressed air supply
Nominal flow rate closed	700 l/min
Note on operating and pilot medium	Lubricated operation possible (subsequently required for further operation)
Product weight	105 g
Materials information for screw-in stud	Brass Nickel plated
Materials note	Conforms to RoHS
Materials information for thread seal	PTFE