

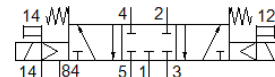
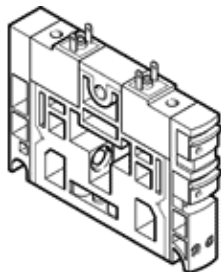
solenoid valve

CPV18-M1H-5/3GS-1/4

Part number: 176061

FESTO

This type is suitable for vacuum.
For valve terminal CPV. The valve housing contains one 5/3-way valve, which is normally closed.



Data sheet

Feature	values
Valve function	5/3 closed
Type of actuation	electrical
Valve size	18 mm
Standard nominal flow rate	1,400 l/min
Operating pressure	-0.9 ... 10 bar
Design structure	Piston slide
Type of reset	mechanical spring
Protection class	IP65
Authorisation	C-Tick
Nominal size	8 mm
Exhaust-air function	not throttleable
Sealing principle	soft
Assembly position	Any
Manual override	detenting Pushing
Type of piloting	Piloted
Pilot air supply	external Internal
Flow direction	non reversible
Freedom from overlap	Yes
Note on forced dynamisation	Switching frequency at least once a week
Pilot pressure	3.5 ... 8 bar
b value	0.4
C value	5.66 l/sbar
Switching time off	32 ms
Switching time on	14 ms
Duty cycle	100% with holding current reduction
Electrical power consumption	1.5 W
ATEX category Gas	II 3G
Explosion ignition protection type Gas	Ex nA IIC T4 X Gc
Explosion protection certification outside the EU	NEC 500 Class I, Div. 2
Explosion-proof ambient temperature	-5°C ≤ Ta ≤ +50°C
Operating medium	Compressed air in accordance with ISO8573-1:2010 [7:4:4]
Note on operating and pilot medium	Lubricated operation possible (subsequently required for further operation)
CE mark (see declaration of conformity)	to EU directive for EMC
Corrosion resistance classification CRC	2 - Moderate corrosion stress
Storage temperature	-20 ... 40 °C
Medium temperature	-5 ... 50 °C
Ambient temperature	-5 ... 50 °C
Product weight	260 g
Mounting type	with through hole

Feature	values
Auxiliary pilot air port 12/14	Common line
Pilot exhaust port 82/84	Common line
Pneumatic connection, port 1	Common line
Pneumatic connection, 11	Common line
Pneumatic connection, port 2	G1/4
Pneumatic ports 3/5 combined	Common line
Pneumatic connection, port 4	G1/4
Materials note	Conforms to RoHS
Materials information for seals	HNBR NBR
Materials information, housing	Aluminium die cast Brass POM PPS Steel