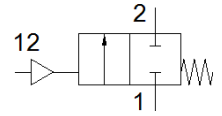
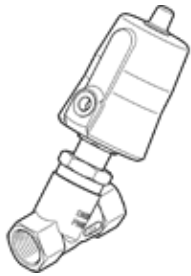


angle seat valve

VZXF-L-M22C-M-A-N34-180-M1-V4V4T-50-20

Part number: 1002547

FESTO



Data sheet

| Feature | values |
|--|---|
| Design structure | Poppet valve with spring return |
| Type of actuation | pneumatic |
| Sealing principle | soft |
| Assembly position | Any |
| Mounting type | Line installation |
| Process valve connection | NPT3/4 |
| Nominal diameter DN | 20 |
| Nominal size | 18 mm |
| Valve function | 2/2 closed, monostable |
| Flow direction | non reversible |
| Medium pressure | 0 ... 20 bar |
| Nominal pressure of process valve | 40 |
| Exhaust-air function | not throttleable |
| Type of reset | mechanical spring |
| Type of piloting | With external control |
| Pneumatic connection | G1/8 |
| Operating pressure | 6 ... 10 bar |
| Medium | Vapour Inert gases Filtered compressed air, degree of filtration 200 µm |
| Operating medium | Compressed air in accordance with ISO8573-1:2010 [7:4:4] |
| Max. viscosity | 600 mm ² /s |
| Medium temperature | -40 ... 200 °C |
| Ambient temperature | -10 ... 60 °C |
| Flow rate Kv | 7.5 m ³ /h |
| Materials note | Contains PWIS substances Conforms to RoHS |
| Materials information, housing | Stainless steel casting |
| Material number for housing | 1.4408 |
| Notes on materials for drive head | Stainless steel |
| Information on materials, spindle washer | PTFE |
| Information on materials, seat seal | PTFE |
| Product weight | 1,400 g |
| Corrosion resistance classification CRC | 3 - High corrosion stress |