

Solenoid valve CPA14-M1H-5JS

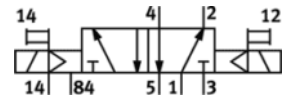
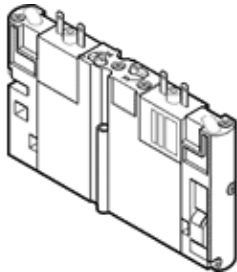
Part number: 173941
Product to be discontinued

FESTO

This type is suitable for vacuum.

Type to be discontinued. Available until 2016. See Support Portal for alternative products.

For valve terminal CPA.



Data sheet

Feature	values
Valve function	5/2 bistable
Type of actuation	electrical
Width	14 mm
Standard nominal flow rate	600 l/min
Operating pressure	-0.9 ... 10 bar
Design structure	Piston slide
Nominal size	5 mm
Exhaust-air function	not throttleable
Sealing principle	soft
Assembly position	Any
Manual override	with accessories, detenting
Type of piloting	Piloted
Flow direction	non reversible
Pilot pressure	2 ... 8 bar
b value	0.28
C value	2.7 l/sbar
Switching time reversal	10 ms
Operating medium	Compressed air in accordance with ISO8573-1:2010 [7:4:4]
Note on operating and pilot medium	Lubricated operation possible (subsequently required for further operation)
Corrosion resistance classification CRC	2
Medium temperature	-5 ... 50 °C
Ambient temperature	-5 ... 50 °C
Mounting type	with through hole
Pneumatic connection, port 1	Sub-base
Pneumatic connection, port 2	Sub-base
Pneumatic connection, port 3	Sub-base
Pneumatic connection, port 4	Sub-base
Pneumatic connection, port 5	Sub-base
Materials information for seals	NBR
Materials information, housing	Aluminium die cast