

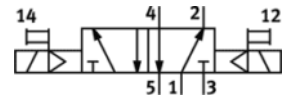
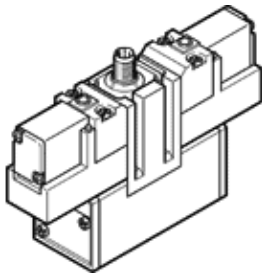
Solenoid valve

JMEBH-5/2-D-3-ZSR-C

Part number: 184509

FESTO

With central plug connector



Data sheet

Feature	values
Valve function	5/2 bistable
Type of actuation	electrical
Width	65 mm
Standard nominal flow rate	4,500 l/min
Operating pressure	2 ... 10 bar
Design structure	Piston slide
Protection class	IP65
Nominal size	14.5 mm
Grid dimension	71 mm
Exhaust-air function	throttleable
Sealing principle	soft
Assembly position	Any
Conforms to standard	ISO 5599-1
Manual override	with accessories, detenting Pushing
ISO code	355
Type of piloting	Piloted
Pilot air supply	Internal
Flow direction	non reversible
Characteristic coil data	24V DC: 2,5W
Operating medium	Compressed air in accordance with ISO8573-1:2010 [7:4:4]
Note on operating and pilot medium	Lubricated operation possible (subsequently required for further operation)
Corrosion resistance classification CRC	2
Medium temperature	-10 ... 50 °C
Ambient temperature	-10 ... 50 °C
Product weight	1,080 g
Electrical connection	M12x1 Central plug Round design
Mounting type	with through hole
Pilot exhaust port 82	Non-ducted
Pilot exhaust port 84	Non-ducted
Pneumatic connection, port 1	Connection plate size 3 as per ISO 5599-1
Pneumatic connection, port 2	Connection plate size 3 as per ISO 5599-1
Pneumatic connection, port 3	Connection plate size 3 as per ISO 5599-1
Pneumatic connection, port 4	Connection plate size 3 as per ISO 5599-1
Pneumatic connection, port 5	Connection plate size 3 as per ISO 5599-1
Materials information for seals	NBR
Materials information, housing	Aluminium die cast